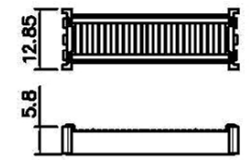
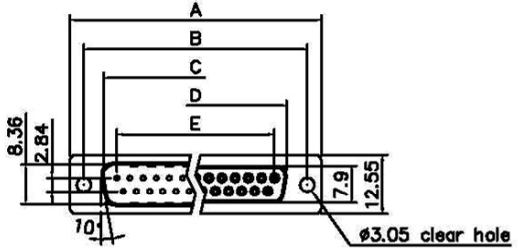


RoHS COMPLIANT

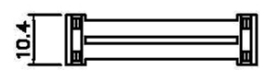
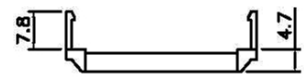
REVISIONS				
REV	ECN NO.	DESCRIPTION	APPROVED BY	DATE
A				

Product Specification
 Material
 Insulator : Glass-Filled Thermoplastic PBT, UL94V-0
 Contact : Brass
 Shell : Steel, 100u" Tin Over 50u" min Copper
 Clinch Nut : Brass, Nickel Plated
 Screwlock : Brass, Nickel Plated

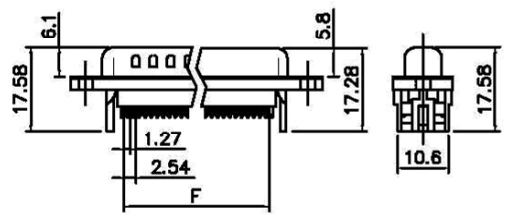
Electrical
 Contact Resistance : 20 milliohms
 Max at 1 AMP DC.
 Insulation Resistance : 1000
 megohms at 500 VDC
 Dielectric Withstanding Voltage :
 1000 VAC/rms 60Hz for 1 minute
 Current Rating : 3 AMP
 Voltage Rating : 250 VAC/rms 60Hz



Cover



Strain Relief



With Insulator Support

Dimensions						
Positions	A	B	C	D	E	F
9	30.81	24.99	16.92	16.33	11.08	10.16
15	39.20	33.30	25.25	24.66	19.39	17.78
25	53.05	47.04	38.96	38.38	33.24	30.48
37	69.40	63.50	55.42	54.84	49.86	45.72

DO NOT SCALE DRAWING

DIMENSIONS: <input type="checkbox"/> MM [INCH] <input type="checkbox"/> INCH [mm] <input checked="" type="checkbox"/> MM ONLY		CAD GENERATED DRAWING, DO NOT MANUALLY UPDATE		SHALLIN ELECTRONICS CO.,LTD.	
UNLESS OTHERWISE SPECIFIED, GENERAL TOLERANCE: DECIMALS ANGLES .X ±0.38 [0.015] X° ±3° .XX ±0.25 [0.010] .X° ±1.0° .XX ±0.13 [0.005]		CHECKED BY AND DATE JUSTIN XING 10-20-05 APPROVED BY AND DATE KING CHIU 10-20-05 THIRD ANGLE PROJECTION		TITLE D-SUB IDC TYPE	
MATERIAL FINISH				DRAWING NO. YGMxxP & YGMxxS	
		SCALE: 1 : 1 SIZE: A3		REV A	
FILE NO:				SHEET 1 OF 5	